

Macro



Integration Services

NEW PRODUCT LINE FOR 2020

We are offering a new line of products that help you get back to business safely and help protect your business into the future!

Go to www.macrointegrations.com for more information

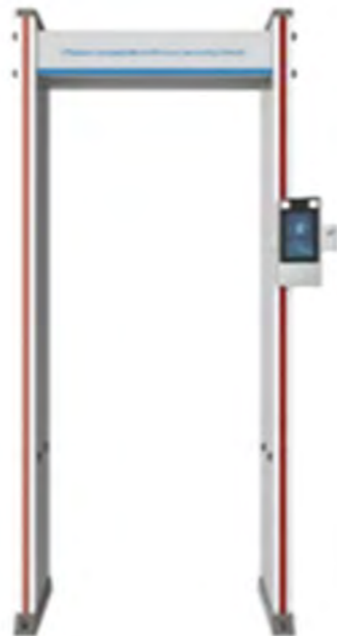


DELPHI

Standing pole-mounted body thermometer

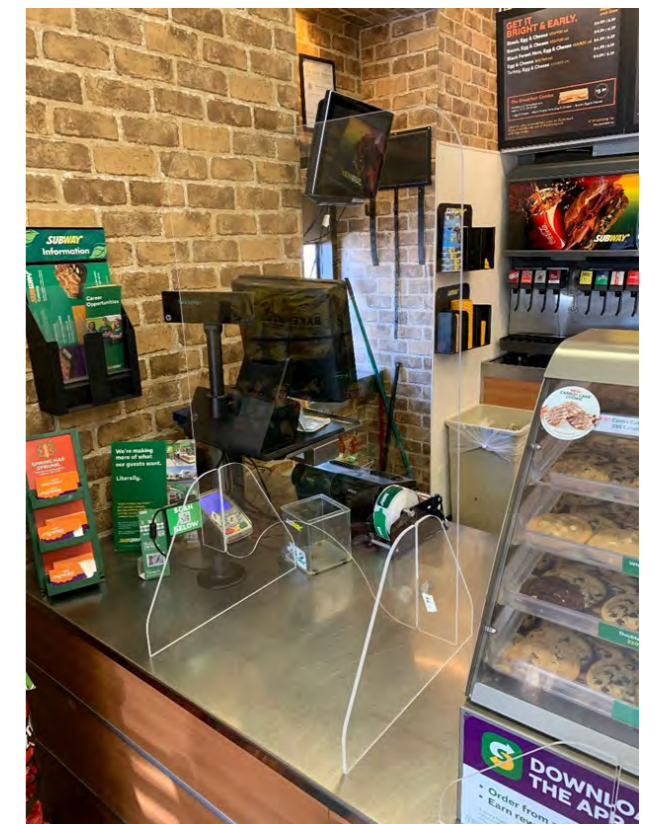
LOGOS

Body thermometer and metal detector



IN MOTION THERMAL
MEASUREMENT AND SCREENING
BULLET CAMERAS

MACRO ACRYLIC SHIELDS



NON CONTACT WRIST - SKU

Non contact pole mounted thermometer



Key Features

- Sterile Non Contact
- Real time alarm
- High Accuracy
- $\leq 0.3^\circ\text{C}$ Accuracy
- 1-3cm measuring distance
- 7" Touchscreen
- Real time temp display
- Stainless steel adjustable pole
- 3 Year Warranty

Thermometer Specs	
Measurement Area	Wrist
Measurement Distance	1-3cm
Precision	0.1°C
Measurement Deviation	$\pm 0.3^\circ\text{C}$
Measurement Range	30°C to 45°C
Display & Alarms	
Display	7" Touch Screen
Count	High temperature count, normal count (resettable)
Alarm Type	Local sound alarm
Physical Specs	
Material	Stainless Steel
Temp Measurement Dimensions	Temperature measurement module: 137.5mm (L) x 68.0mm (W) x 360.8mm (H)
Bracket Dimension	Bracket: 60mm (diameter) x 680mm (height)
Pole Dimensions	Pole: 38mm (diameter) x (250mm/500mm) (height)
Power & Environment	
Power Supply	DC 12V \pm 25% Input
Operating Temperature	15°C to 30°C
Operating Humidity	<95%, non-condensing
Application	Indoor only - windless



The Delphi is a non-contact temperature measuring instrument that measures wrist temperature. It provides abnormal alarm and counting features and is mounted on a pole with adjustable heights.

Metal Detector + Wrist - SKU

Digital Thermometer and Security Gate



Key Features

- High sensitivity metal detector
- Adjustable sensitivity levels
- Non contact measurement
- Real time temperature display
- Real time alarm
- $\leq 0.3^\circ\text{C}$ Accuracy
- 1-2.5cm measuring distance
- 7" Touchscreen & 5.7 inch LCD
- Modular Design
- 3 Year Warranty

Metal Detector Specs	
Detection zones	18 detection zones
Detection sensitivity	0-255 levels for each zone
Remote Control	Standard IR control for remote operations
Counting	Counts people & can alarm based on number
Thermometer Specs	
Measurement Area	Wrist
Measurement Distance	1-2.5cm
Precision	0.1°C
Measurement Deviation	$\pm 0.3^\circ\text{C}$
Measurement Range	30°C to 45°C
Display & Alarms	
Display	7" Touch Screen & 5.7 Inch LCD
Alarm Type	Local sound & Lights alarm
Physical Specs	
External Dimensions	2220mm x 835mm x 578mm
Internal Dimensions	1990mm x 700mm x 578mm
Weight	??
Power & Environment	
Power Supply	AC 100-240V
Operating Temperature	15°C to 30°C
Operating Humidity	<80%, non-condensing
Application	Indoor only - windless



The Logos is a walk-through security gate with metal detection and temperature measurement functions.

In-motion thermal measurement & screening



Thermographic Bullet Cameras are equipped with highly sensitive thermal and optical sensors and a graphical processing unit to run the video content (VCA) Algorithms.



Macro has produced clear plastic safety screens to help you observe social distancing. These screens form a physical barrier against coughing, sneezing and other hazards, creating a safe transaction environment for staff, customers and visitors.

Open for Business

Go to www.macrointegrations.com for more information

IF YOU ARE THINKING ABOUT REOPENING YOUR BUSINESS, OFFICE OR DISTRIBUTION CENTER, LET'S TALK. MACRO CAN HELP IF YOU NEED SOLUTIONS TO PROTECT YOUR ASSOCIATES AND YOUR CUSTOMERS.

PLEASE CONTACT SALES

PHONE (336) 931-0674

EMAIL INFO@MACROINTEGRATIONS.COM

